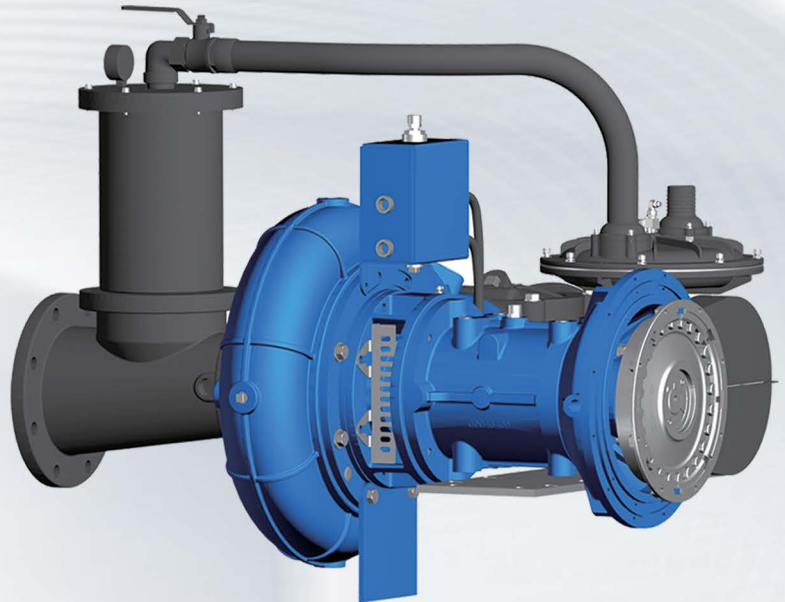


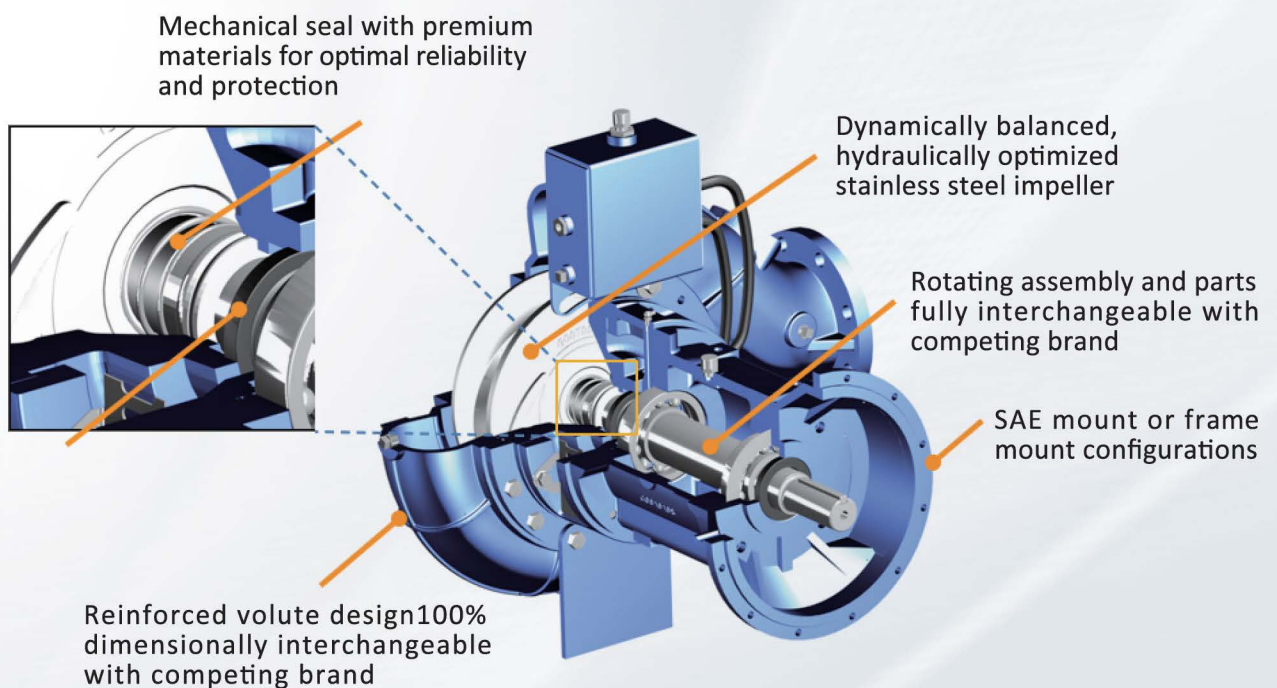


Key Features

- Built with advanced hydraulic design, premium materials, and the strictest quality standards
- Stainless steel, dynamically balanced impeller for improved efficiency and wear / corrosion resistance
- Lip Seals and V Seal for additional protection against leakage and dust ingress
- Multiple design configurations (engine & frame mounted) for maximum installation flexibility
- All components fully interchangeable with existing F16 & F18 bearing housing / frames of competing brand



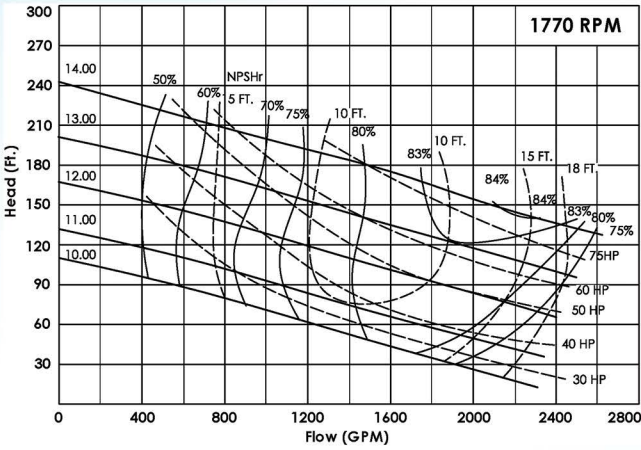
Product Advantages





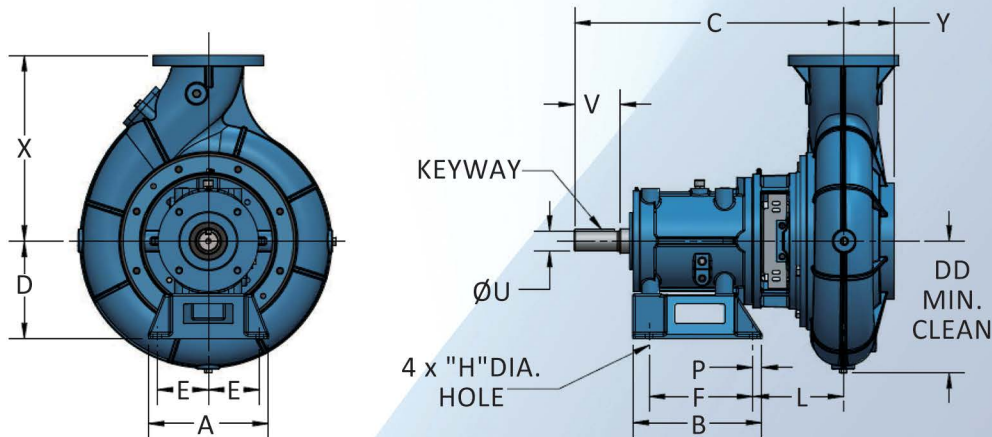
Pump Performance

Specifications



Flow	Up to 2400 GPM at 1770 RPM
Head	Up to 245 ft
Suct. / Discharge	6" x 6"
Mounting	SAE Engine Mount or Frame Mount
Volute	Cast Iron ASTM A48 CL30
Impeller	Stainless Steel ASTM A743 CA40
Mechanical Seal	Type 1 Carbon/Tungsten Carbide
Weight	536 lbs

Installation Dimensions



MODEL	FRAME	CONNECTION		DISC. INCR.	A	B	C	D	DD
		DISCH.	SUCT.						
P2406	F16	6"	6"	45°	12.00"	12.88"	26.86"	9.75"	9.75"

E	F	H	L	P	U	V	X	Y	KEY
5.13"	10.38"	0.81"	9.00"	0.88"	2.00"	4.50"	18.56"	5.00"	1/2"x7/16"x4.00"

Optional Accessories



Notes:

1. Discharge position can be rotated in 45° increment per customer request
2. Pump rotation from drive end
3. Dimensions are for estimating purposes only