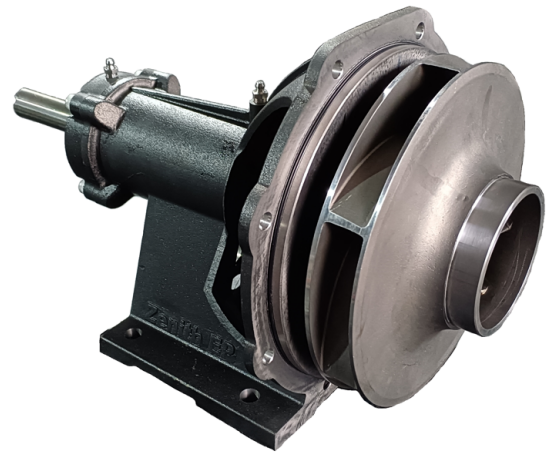


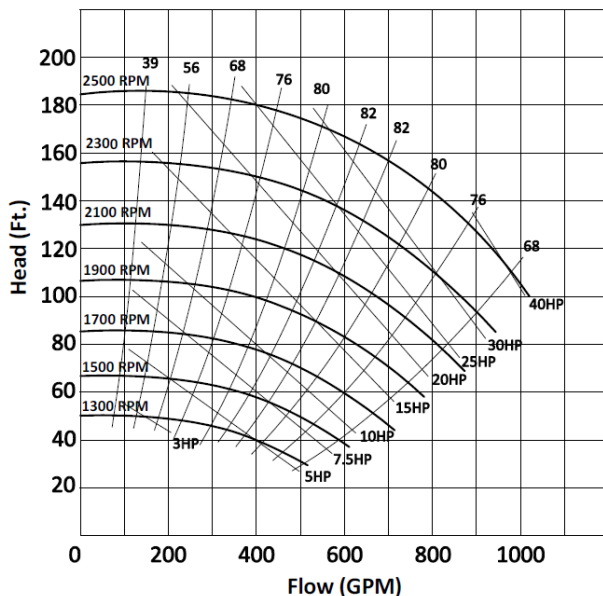


Key Features

- Built with premium materials and the strictest quality standards, resulting the most reliable and durable pumps on the market
- Advanced hydraulic design provides the highest pumping capacity and discharge pressures on the market, enabling wider and further spray coverage from multiple nozzles
- Stainless steel, dynamically balanced impeller offers improved pump efficiency and wear/corrosion resistance for increased service life
- Exceeds US Department of Energy Requirements 10CFR 429 & 431
- Convenient back pull-out design. Rotating assembly seamlessly retrofits onto installations with common competing brands
- Broad range of configurations (NPT/Victaulic, CW/CCW, mechanical seal/packing) for maximum installation flexibility
- Improved design for easier fastener access during installation and pump service



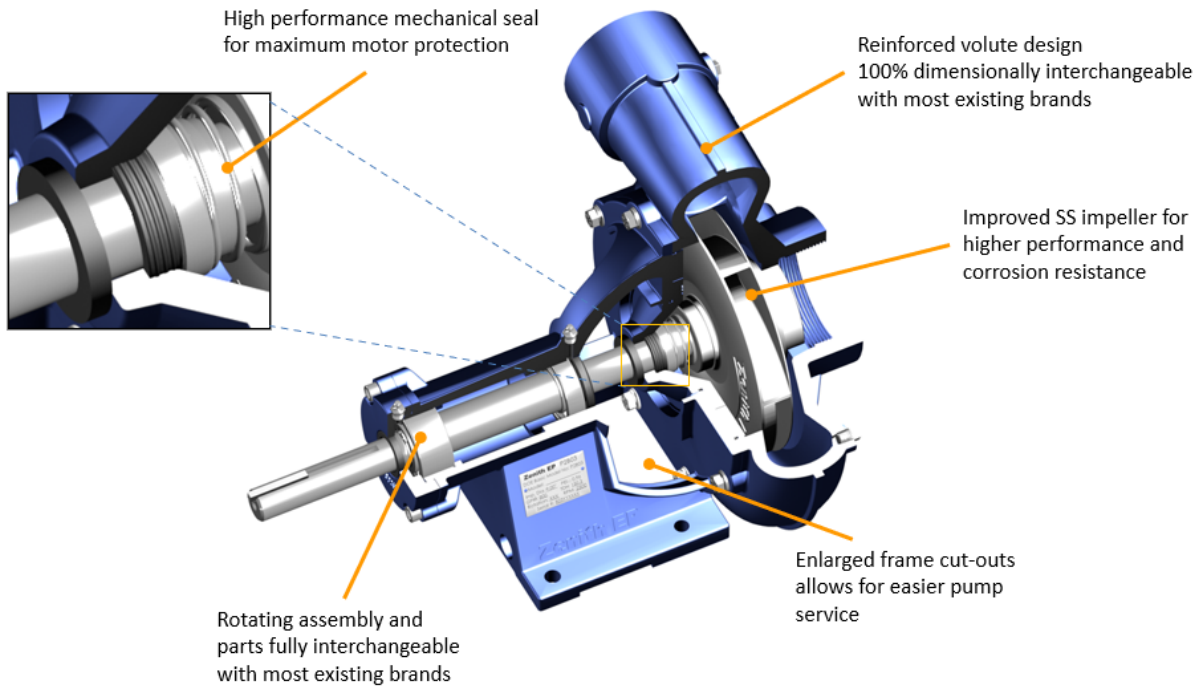
Pump Performance



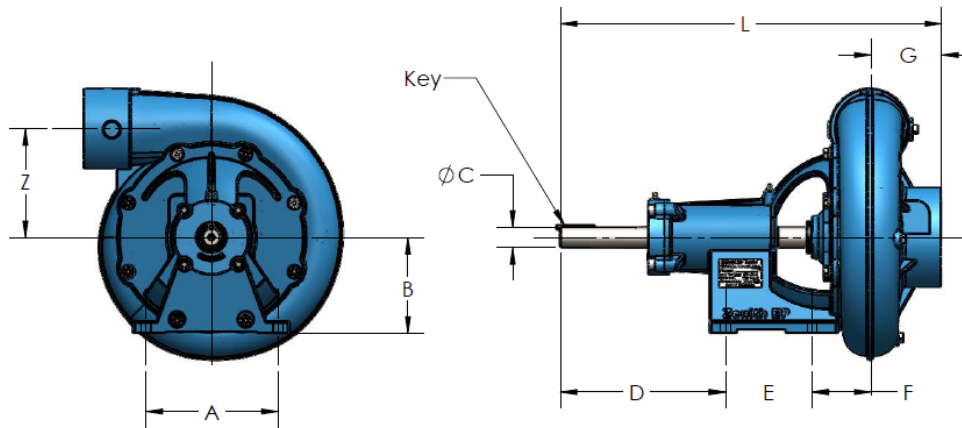
Specifications

Flow	Up to 980 GPM at 2500 RPM
Head	Up to 150 ft
Suct. / Discharge	4" x 3" NPT or Victaulic
Mounting	Frame Mounted Horizontal
Volute	Cast iron ASTM A48 CL30
Impeller	Stainless steel ASTM A743 CA15
Mechanical Seal	Type 21 Carbon/Silicon Carbide
Weight	119 lbs

Product Advantages



Installation Dimensions



BASE DIMENSIONS IN INCHES													
MODEL	CONNECTION		IMP. DIA.	Key	A	B	C	D	E	F	G	Z	L
	DISCH.	SUCT.											
P2B03-NPT-CCW/CW	3" NPT	4" NPT	9.00	0.25 x 2.125	7.25	5.25	1.125	9.07	4.75	3.24	3.88	5.97	20.94
P2B03-VIC-CCW/CW	3" VIC	4" VIC	9.00	0.25 x 2.125	7.25	5.25	1.125	9.07	4.75	3.24	4.52	5.97	21.59

Notes:

1. Discharge position can be rotated in 45° increment per customer request
2. Pump rotation from drive end
3. Dimensions are for estimating purposes only

Proudly Distributed By: