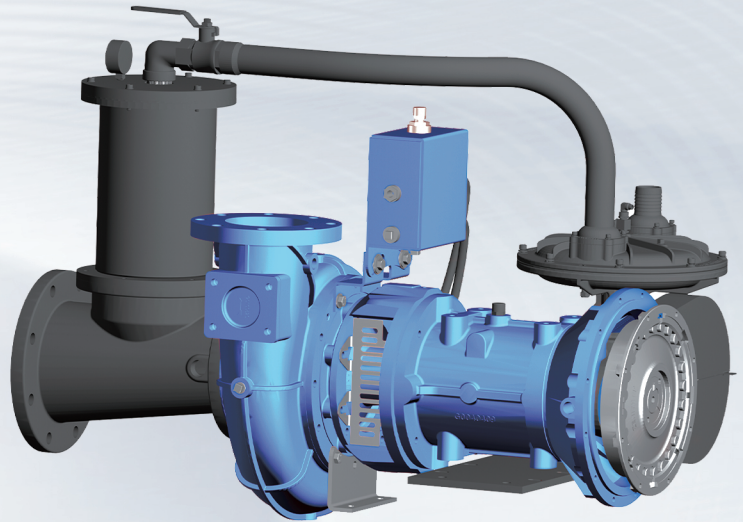


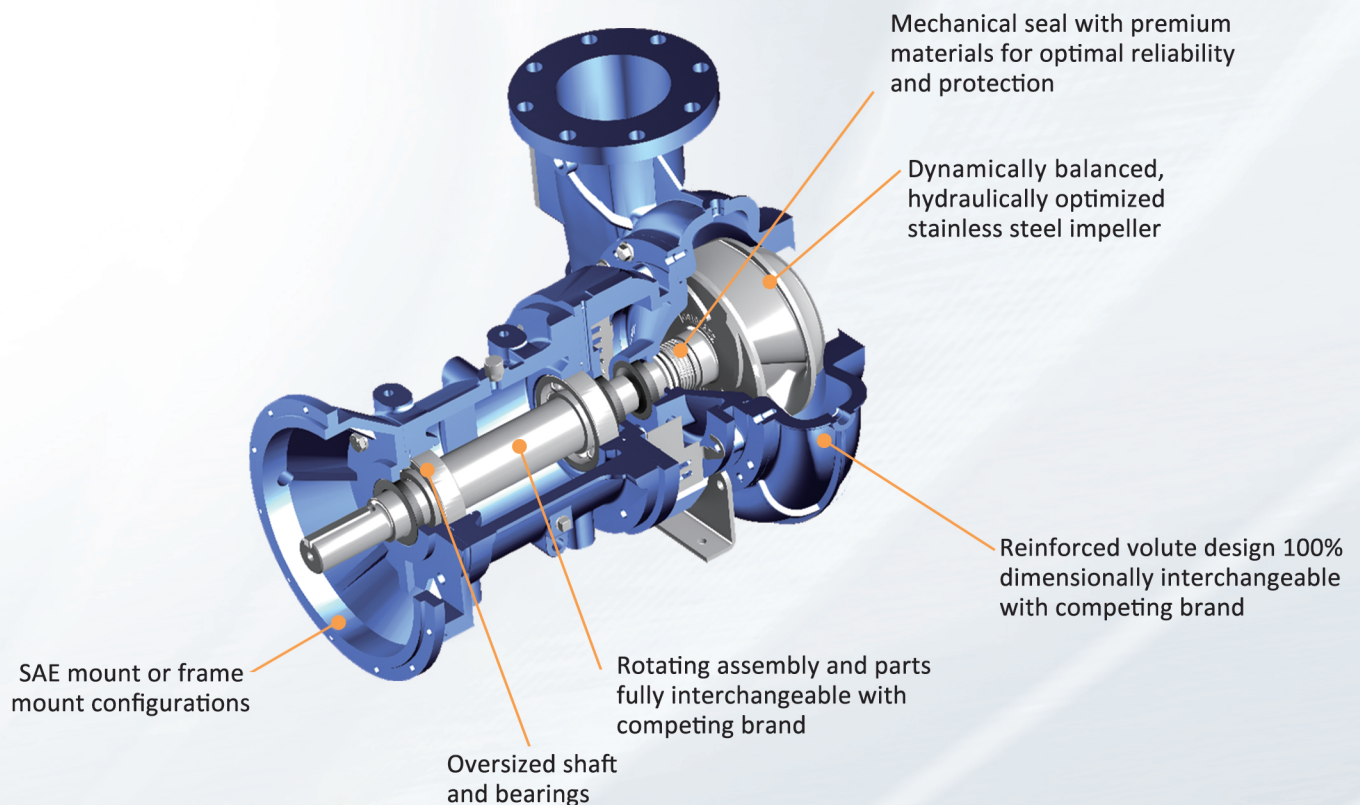


Key Features

- Built with advanced hydraulic design, premium materials, and the strictest quality standards
- Stainless steel, dynamically balanced impeller for improved efficiency and wear / corrosion resistance
- Lip Seals and V Seal for additional protection against leakage and dust ingress
- Multiple design configurations (engine & frame mounted) for maximum installation flexibility
- All components fully interchangeable with existing F16 & F18 bearing housing / frames of competing brand

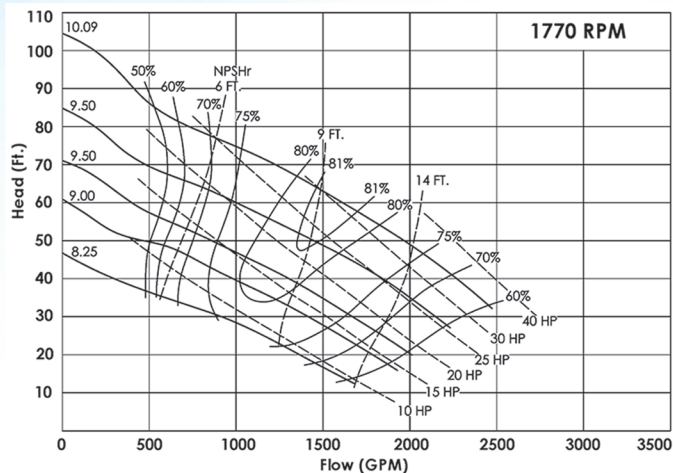


Product Advantages





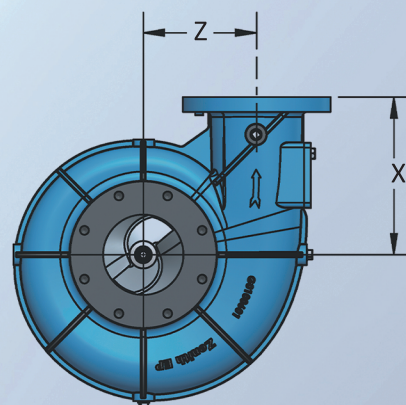
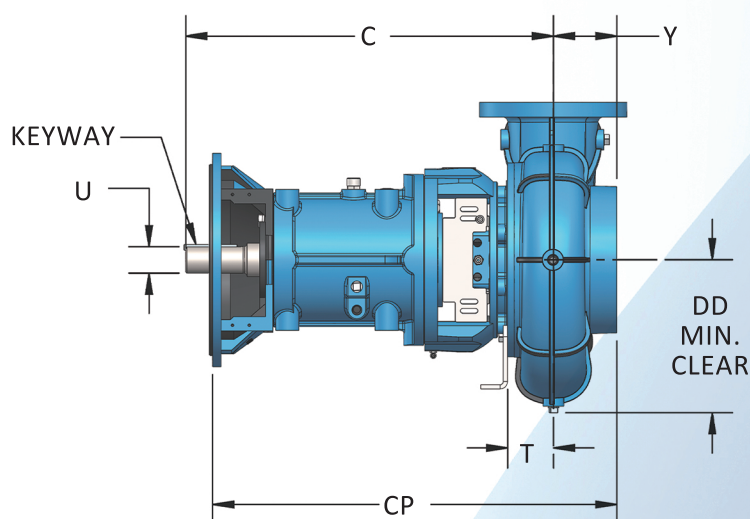
Pump Performance



Specifications

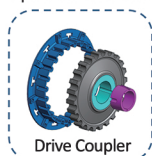
Flow	Up to 2750 GPM at 1770 RPM
Head	Up to 150 ft
Suct. / Discharge	6" x 6"
Mounting	SAE Engine Mount or Frame Mount
Volute	Cast Iron ASTM A48 CL30
Impeller	Stainless Steel ASTM A743 CA40
Mechanical Seal	Type 2 Tungsten Carbide/SiC
Weight	470 lbs

Installation Dimensions



MODEL	FRAME	CONNECTION		DISC. INCR.	C	CP	DD	T	U	X	Y	Z	KEY
		DISCH.	SUCT.										
P2506	F16	6"	6"	45°	27.39"	30.14"	11.39"	3.43"	2.00"	11.76"	4.71"	8.46"	1/2"x1/2"x4.00"

Optional Accessories



Notes:

1. Discharge position can be rotated in 45° increment per customer request
2. Pump rotation from drive end
3. Dimensions are for estimating purposes only