



Product Overview

The GEM series electromagnetic flow meter utilizes cutting-edge technology to provide reliable and precise measurement of water and wastewater across multiple industries.

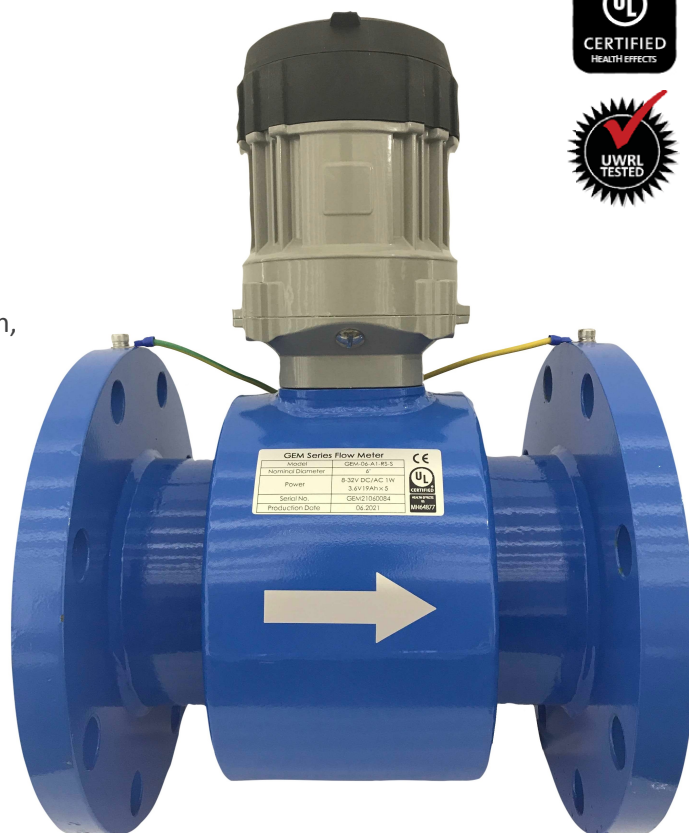
The GEM's advanced design enables maximum flexibility to provide superior accuracy in the most challenging fluid applications and installation conditions. The GEM series features a heavy-duty design, advanced LCD display, and premium materials and workmanship.

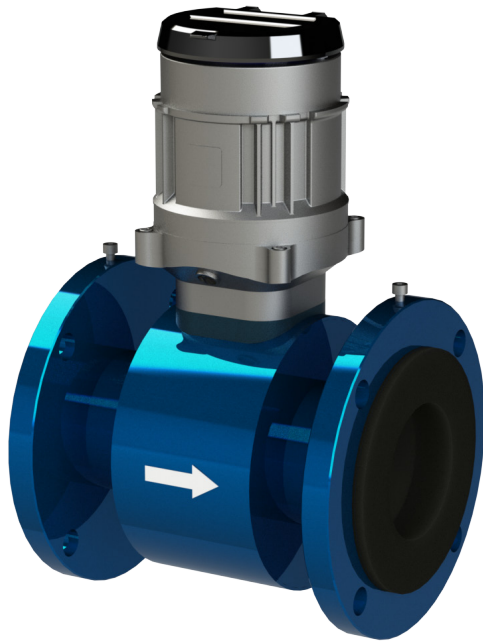
Key Features

- No moving parts within flow tube, resulting in low maintenance requirements and minimal head loss
- Minimal straight pipe requirements
- Rugged construction rated to IP68
- Variety of data-output and telemetry options
- Optional built-in data logger
- Android and iOS Bluetooth app
- NSF/ANSI 61 certified (4" and above)

Applications

- Municipal waterworks
- Industrial / process water
- Water / wastewater treatment
- Groundwater / irrigation
- Pump Stations
- Upstream oil & gas production





Product Range

The GloTech GEM series is available in a wide range of sizes and material options to meet any application requirement. With diameters ranging from 2" to 80", the GEM can be your one-stop solution provider for reliable flow measurement.

SIZE*	L	H	H1	D**
2"	7.9	13.0	10.0	6.0
3"	9.1	14.6	10.8	7.5
4"	10.2	15.7	11.2	9.0
6"	12.3	17.4	11.9	11.0
8"	14.3	19.4	12.6	13.5
10"	18.2	21.7	13.7	16.0
12"	20.2	24.1	14.6	19.0
14"	20.2	25.8	15.3	21.0
16"	20.2	28.1	16.3	23.5
18"	24.1	29.8	17.3	25.0
20"	24.1	32.1	18.3	27.5
24"	24.1	35.7	19.7	32.0

* Shown in inches. Larger sizes available upon request

** Standard flange dimensions per ANSI 16.5. Other flange standards (e.g. DIN) available upon request

Technical Specifications

Size	2" ~ 80"
Medium Temp	≤ 320 F
Conductivity	≥10 μS / cm
Flow Velocity	0.3 ~ 40 ft / s
Accuracy	± 0.5 %
Enclosure Rating	IP68
Max Pressure	290 psi
Flange Standards	ANSI, DIN, BS
Estimated Battery Life	4 - 6 Years
Power	3.6V 19Ah x 5 8 ~ 32V DC / 8 ~ 32V AC
Ambient Temp	-40 F ~ 140 F
Outputs	Pulse / Frequency, 4-20mA , Bluetooth, RS 485
Meter Housing	Carbon Steel
Electronics Housing	Die Cast Aluminum
Flow Tube	304 SS
Liner	Neoprene, PTFE, FEP
Electrodes	316 SS, Titanium
NSF 61	Rubber Liners 4" and Above

